
CITY OF KELOWNA

MEMORANDUM

Date: January 9, 2008
File No.: 0410-01
To: City Manager
From: Director Corporate Development
Subject: Electoral Boundaries Commission Preliminary Report

Report Prepared by: *[Deputy City Clerk]*

RECOMMENDATION:

THAT Council receive for information the Director of Corporate Development's comments on the Preliminary Report of the BC Electoral Boundaries Commission as they pertain to City of Kelowna electoral districts;

AND THAT the Mayor present any subsequent recommendations of Council to the Electoral Boundaries Commission at the Public Hearing in Kelowna scheduled for Thursday, January 17th, 2008;

AND THAT the Mayor forward in writing any subsequent recommendations of Council to the Electoral Boundaries Commission for their consideration.

BACKGROUND:

There are currently two provincial electoral boundaries covering the City of Kelowna: Kelowna-Lake Country and Kelowna-Mission

The BC Electoral Boundaries Commission Preliminary Report recommended adding one electoral district in the Okanagan, and under their proposal, the City of Kelowna would be part of three electoral districts, an increase from the current two. The proposed boundaries of these three districts are attached. It is noted that the area around downtown Kelowna is proposed to be part of an electoral boundary that spans the lake (proposed "Kelowna-Westside Electoral Boundary").

The Commission has made recommendations also regarding electoral boundaries under a proposed BC single-transferable (BC-STV) vote system. The Commission proposed that the City of Kelowna be part of two BC-STV Electoral Districts: Okanagan-Shuswap and Okanagan Boundary. Most of the City would be included in the Okanagan-Shuswap Electoral District, while downtown Kelowna and surrounding area would be part of the Okanagan Boundary Electoral District. (see attached maps)

The Commission is holding a series of public hearings this month, including one in Kelowna the evening of January 17th, 2008 at the Grand Okanagan. Mayor Shepherd is registered to speak at the



Hearing. Public submissions may be made to the Commission until January 23, 2008. The commission will submit their final report to the Legislature by February 15, 2008.

Additional information may be found on the Commissions' web site at <http://www.bc-ebc.ca/>.

Staff will present additional information to Council during the meeting.

INTERNAL CIRCULATION TO:

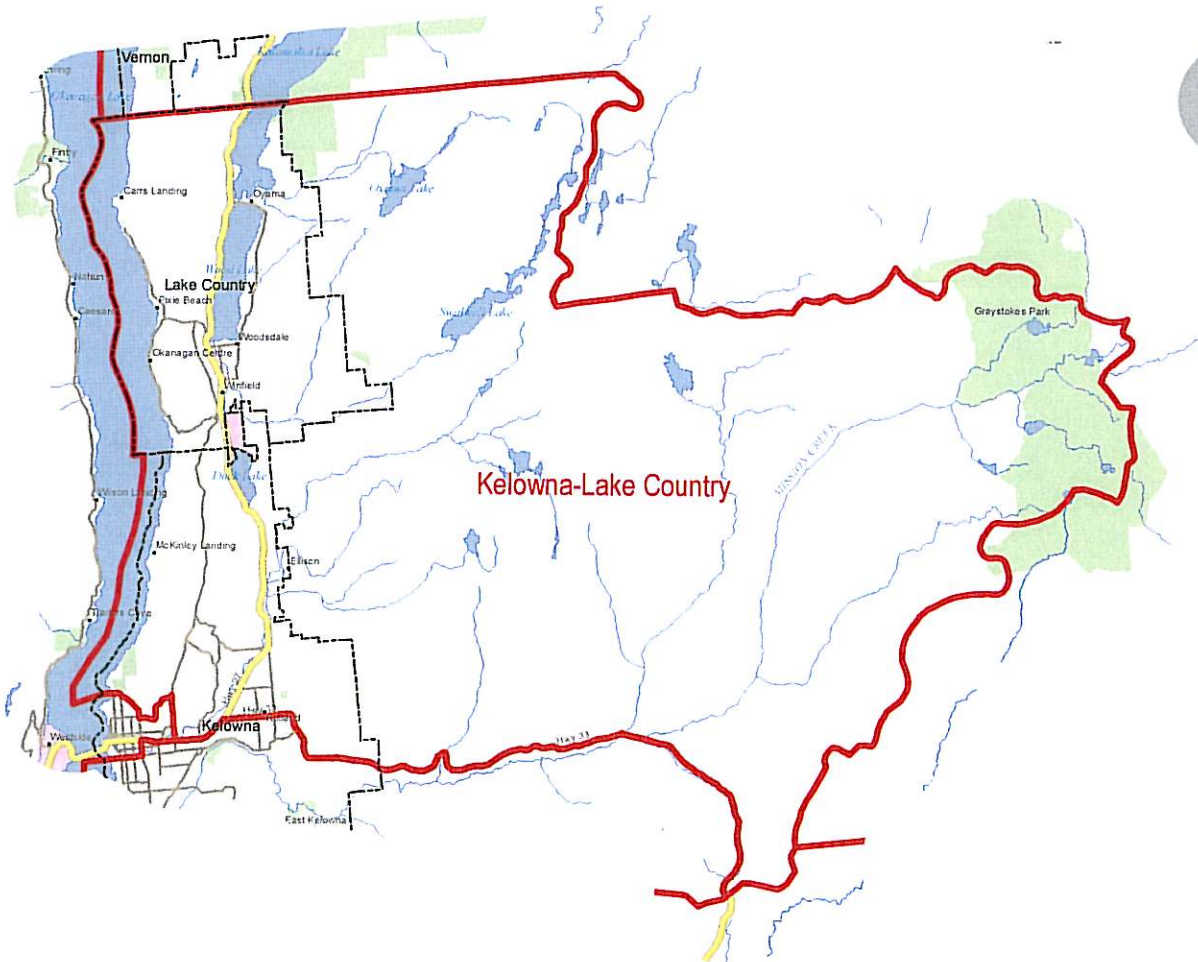
City Clerk
Manager, Policy, Research & Strategic Planning

Considerations that were not applicable to this report:
LEGAL/STATUTORY AUTHORITY:
LEGAL/STATUTORY PROCEDURAL REQUIREMENTS:
EXISTING POLICY:
FINANCIAL/BUDGETARY CONSIDERATIONS:
PERSONNEL IMPLICATIONS:
TECHNICAL REQUIREMENTS:
EXTERNAL AGENCY/PUBLIC COMMENTS:
COMMUNICATIONS CONSIDERATIONS:
ALTERNATE RECOMMENDATION:

Submitted by:


R. Baker, Director Corporate Development

cc: City Clerk
Manager, Policy, Research & Strategic Planning



Proposed Single Member Plurality Boundary **Kelowna-Lake Country Electoral District**



Proposed SMP Electoral District



Projection/Datum: ALBERS/NAAD83
 15 August 2007

Population: 51,968
 Area km²: 1,181
 Deviation: 2.3 %

* based on 61 electoral districts, with a
 provincial electoral quotient of 50,784

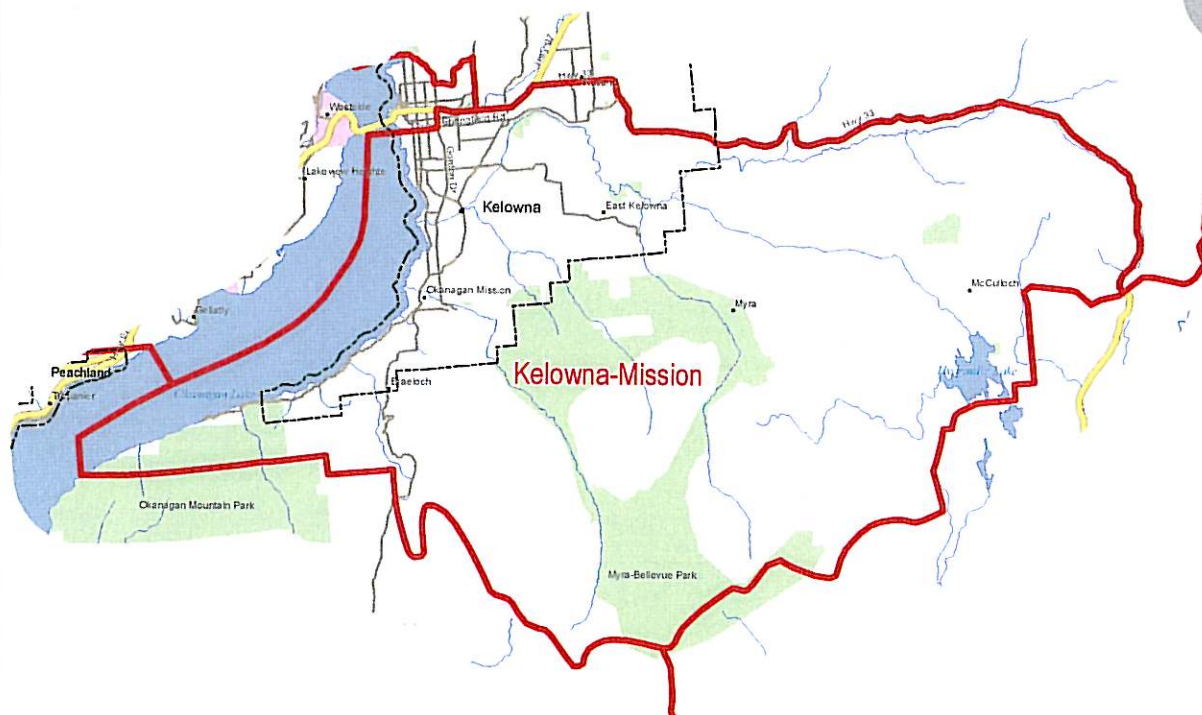
Produced by:
BC Electoral Boundaries Commission



British Columbia
Electoral Boundaries Commission

PO Box 10073
 7601 700 W. Georgia St.
 Vancouver, BC V7Y 1E6

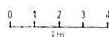
Phone: 604-660-1203 Toll Free: 1-877-670-1203
 Fax: 604-660-1207 Toll Free: 1-877-660-1207
 E-mail: info@bc-ebc.ca
 Website: www.bc-ebc.ca



Proposed Single Member Plurality Boundary
Kelowna-Mission Electoral District



Proposed SMP Electoral District



Projection/Datum: ABEPS/11AD83
 15 August 2007

Population: 53,231
 Area km²: 564
 Deviation: 4.8 %

* based on 81 electoral districts, with a
 provincial electoral quotient of 50,784

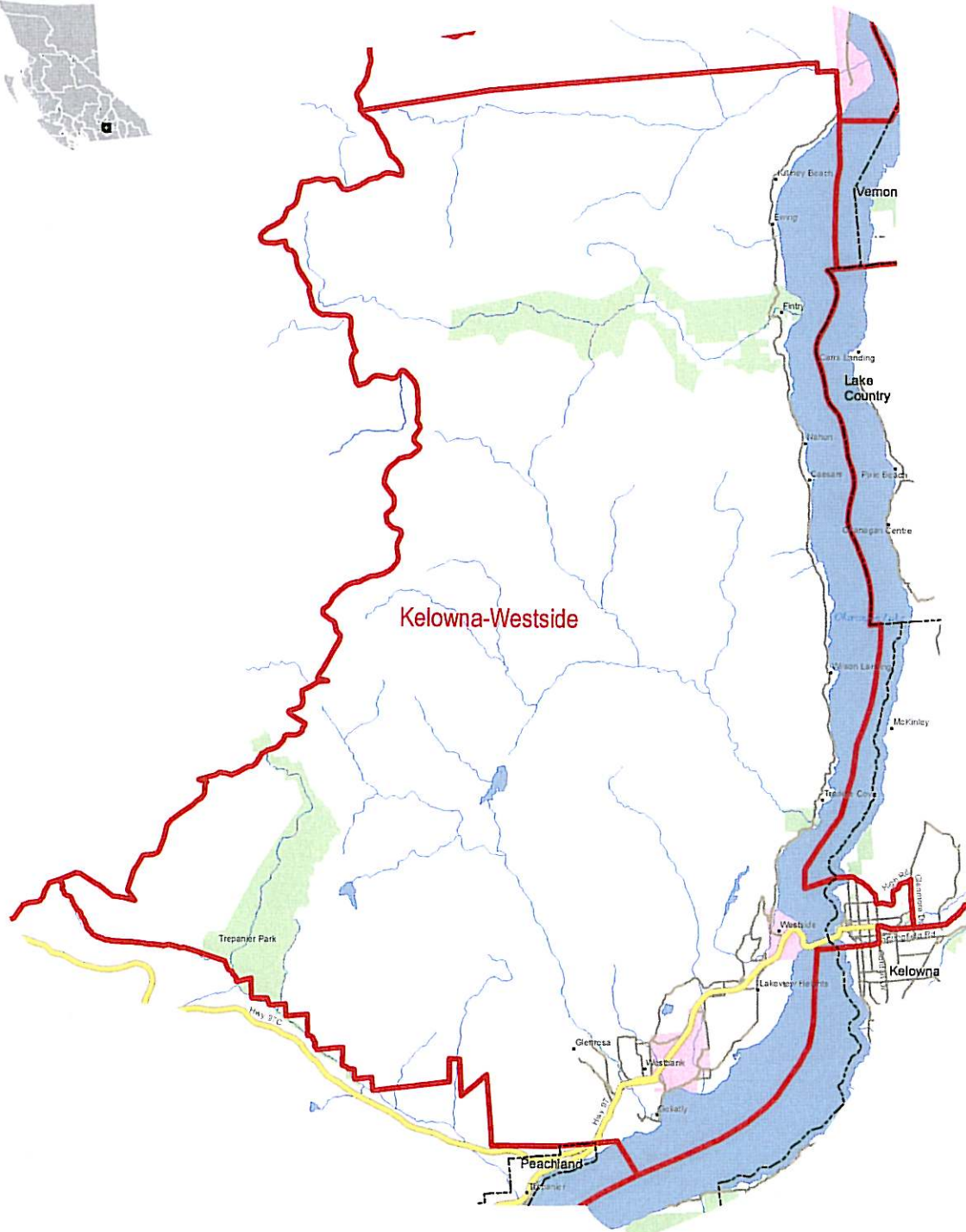
Produced by:
BC Electoral Boundaries Commission



British Columbia
 Electoral Boundaries Commission

P.O. Box 10073
 R601 700 W, Georgia St.
 Vancouver, BC V7Y 1S6

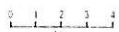
Phone: (604) 660-1203 Toll Free: 1-877-660-1203
 Fax: (604) 660-1207 Toll Free: 1-877-660-1207
 E-mail: info@bc-ebc.ca
 Website: www.bc-ebc.ca



Proposed Single Member Plurality Boundary **Kelowna-Westside Electoral District**



Proposed SMP Electoral District



Projection/Datum: ALBERS/AD83
 15 August 2007

Population: 51,850
 Area km²: 1,140
 Deviation: 2.1 %

*based on 81 electoral districts, with a provincial electoral quotient of 50,784

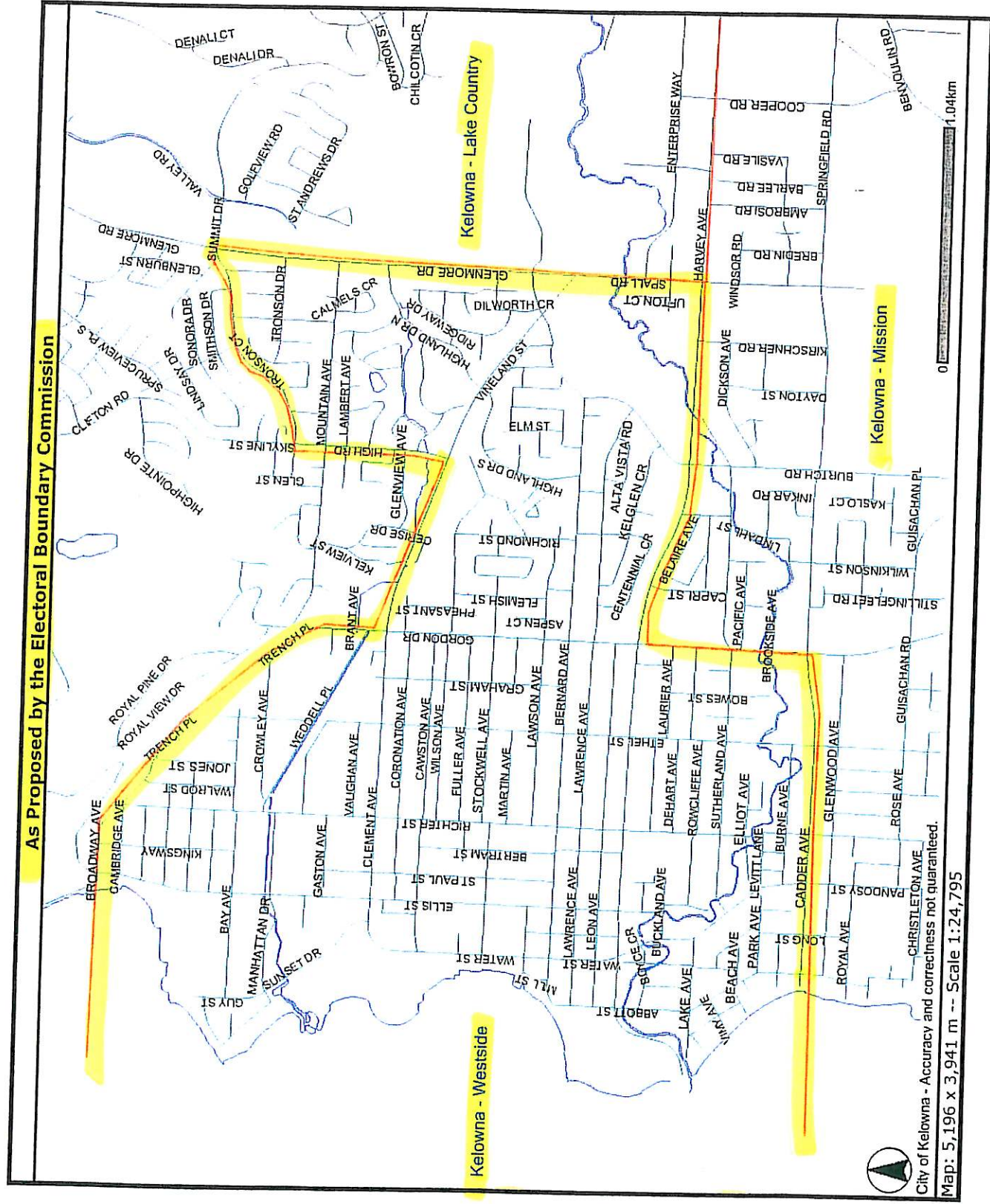
Produced by:
BC Electoral Boundaries Commission



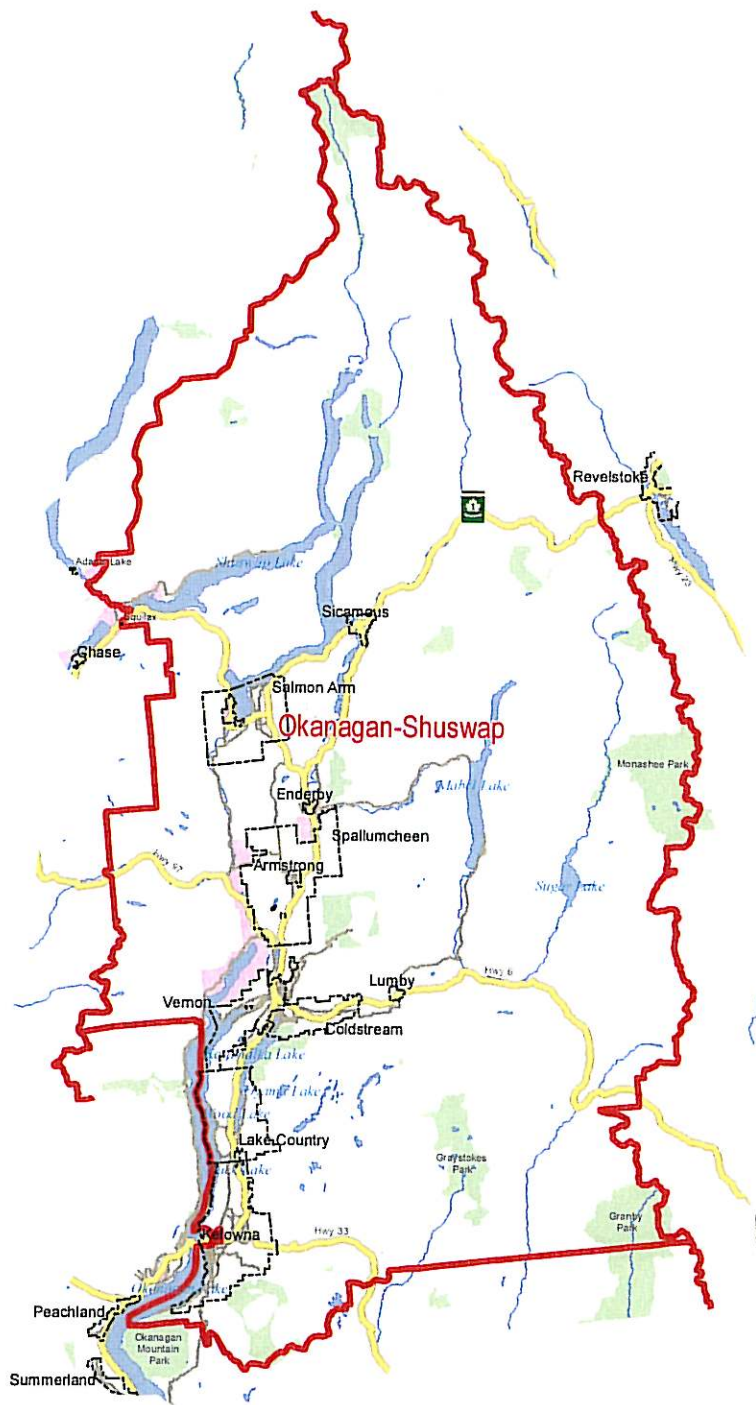
British Columbia
 Electoral Boundaries Commission

PO Box 10073
 #601 700 W. Georgia St.
 Vancouver, BC V7Y 1B6

Phone: 604-650-1203 Toll Free: 1-877-660-1203
 Fax: 604-650-1207 Toll Free: 1-877-660-1207
 E-mail: info@bc-ebc.ca
 Website: www.bc-ebc.ca



This map is for general information only. The City of Kelowna does not guarantee its accuracy. All information should be verified.



Proposed BC-STV Electoral System Boundary
Okanagan-Shuswap BC-STV Electoral District



Proposed BC-STV Electoral District

0 5 10 15 20
 km
 Projection/Datum: ALEERS/AD83
 15 August 2007

Population: 217,395
 Area km²: 15,386
 Deviation: 7 %
 District
 magnitude: 4

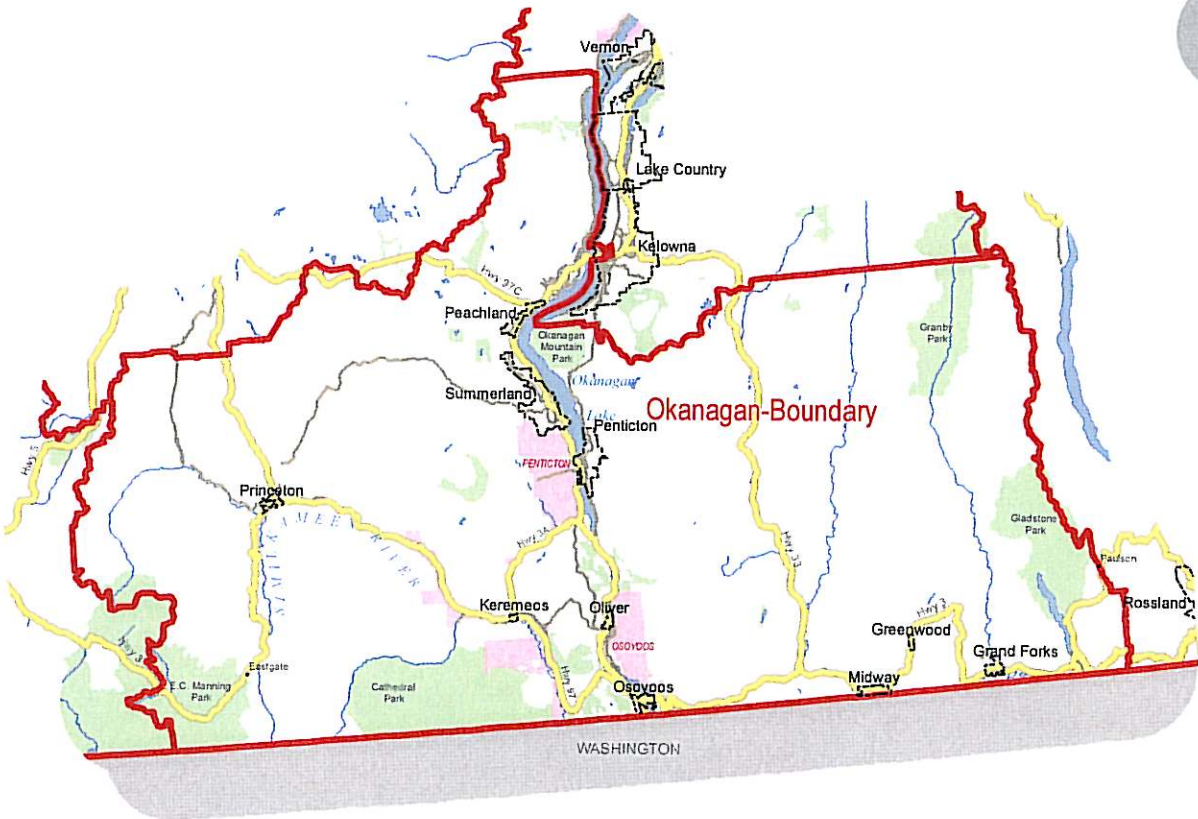
Produced by:
 BC Electoral Boundaries Commission



British Columbia
 Electoral Boundaries Commission

PO Box 10073
 #601 700 W. Georgia St.
 Vancouver, BC V7Y 1B6

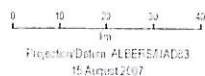
Phone: (604) 660-1203 Toll Free: 1-877-660-1203
 Fax: (604) 660-1207 Toll Free: 1-877-660-1207
 E-mail: info@bc-ebc.ca
 Website: www.bc-ebc.ca



Proposed BC-STV Electoral System Boundary **Okanagan-Boundary BC-STV Electoral District**



Proposed BC-STV Electoral District



Population: 148,679
Area km²: 19,013
Deviation: -2.4%
District magnitude: 3

Produced by:
BC Electoral Boundaries Commission



British Columbia
Electoral Boundaries Commission

PO Box 10073
#601 700 W. Georgia St.
Vancouver, BC V7Y 1B6

Phone: 604-660-1203 Toll Free: 1-877-660-1203
Fax: 604-660-1207 Toll Free: 1-877-660-1207
E-mail: info@bc-ebc.ca
Website: www.bc-ebc.ca